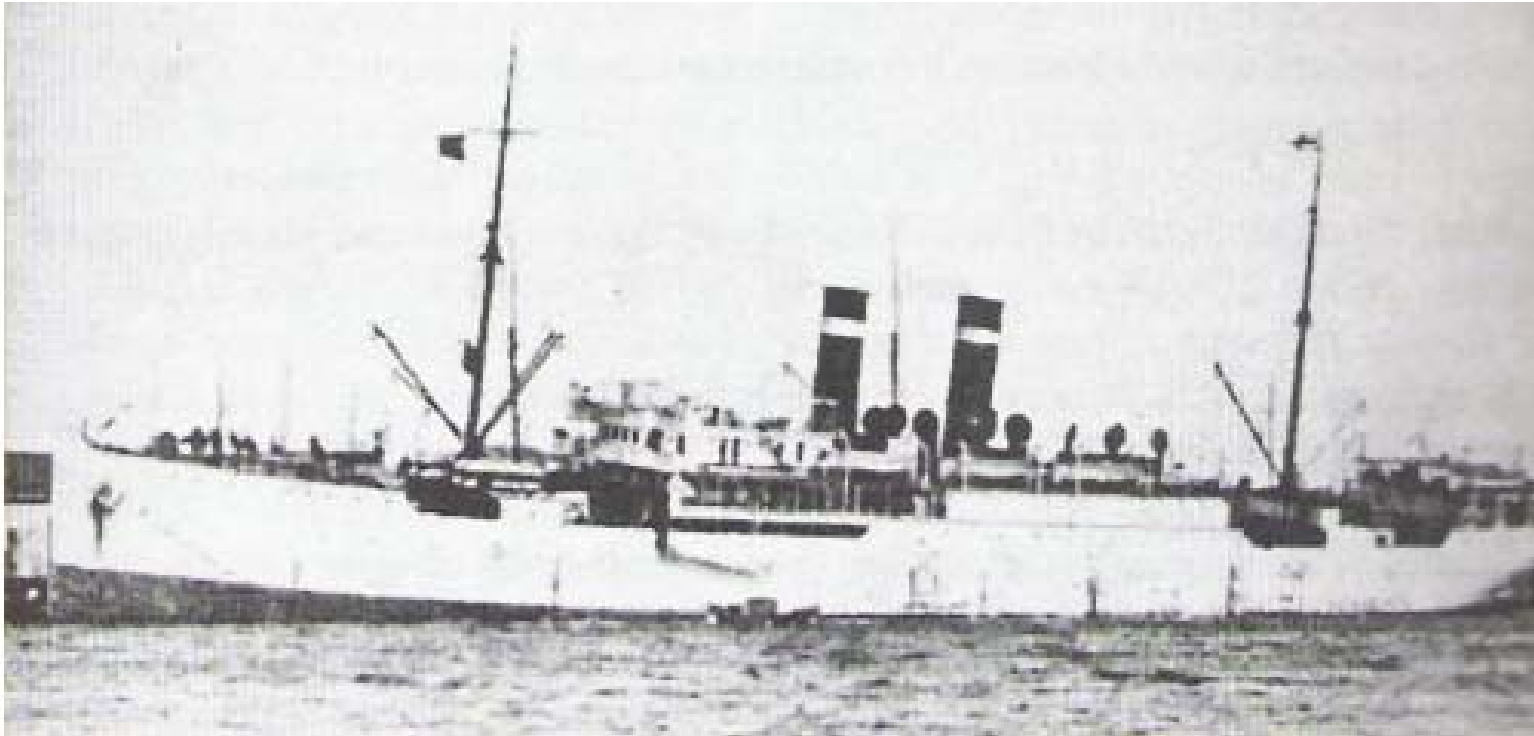


Fabre Line: Germania



1902 Built and engined by Societe Anonyme des Chantiers et Ateliers de Provence, Port de Boux, France

Engines: Triple-expansion, 3 cylinders 38". 59" 90.5 x 51" stroke

Accommodations: First Class 54 Third Class 1,400

1902 2 Aug Launched

1903 19 Mar Maiden Voyage Marseilles-Naples-New York

1912 Second Class accommodation added for 60

1914 Renamed Britannia

1914 6 Oct First voyage as Britannia Marseilles-Almeria-Lisbon-New York

1927 Sold and scrapped at La Seyne.